

# 630 Motor Yacht

## Technical Specification

L A G O O N

**Contents**

---

- Main Characteristics ..... 3
- Construction ..... 4
- Power and drive systems..... 4
- Fuel system ..... 4
- Fresh Water system..... 4
- Black & Grey water system..... 5
- Bilge system ..... 5
- Electrical system..... 5
- Lighting..... 7
- Venting and extraction system ..... 8
- External layout and equipment ..... 8
- Openings.....10
- Equipment and finishing and internal layout.....10

## Main Characteristics

---

Overall Length (LOA)	19.50 m / 64'
Hull Length (LH)	19.05 m / 62'6"
Maximum Beam	10 m / 32'10"
Draft (full load, V-drive)	1.12 m / 3'8"
Height above waterline without radar mast	5.70 m / 18'8"
Height above waterline including radar mast	6.50 m / 21'4"
Displacement (dry)	33.9 t / 74 750 lbs
Displacement (ECC)	34,7t / 76 514 lbs
Displacement (full)	41 t / 90 405 lbs
Fresh water capacity	960 l / 254 US gals
Black water capacity	320 to 480 l / 85 to 127 US gals
Fuel capacity ( <i>upgradable</i> )	3050 l / 806 US gals
Additional optional capacity	1750 l / 462 US gals
Design Category	B :14 - C :16 - D : 40

## Construction

---

- Structural project has been developed according to EN ISO 12215-7.
- Infused FRP + balsa core with polyester and high quality anti-osmotic resins.
- Hull bottom and keels in solid infused laminate
- Infused balsa core structural bulkheads
- Grey paint coat in bilges
- White gel coat hulls
- White gel coat decks with non-skid areas

## Power and drive systems

---

Engines:	VOLVO D4 260 HP Diesel engines (upgradable) Engine speed, rpm 3500
Gearbox:	HS63IV - (Ratio: 2.48/1)
Propellers:	4 Blades fixed propellers 24"x 19
Steering system:	Electrical hydraulic steering system.
Bow Thruster:	Electrical, 24V, 250 MM, 200 KGF
(Optional equipment)	
Maneuvering system :	EVC E VOLVO Engine throttles and control panel on port steering station on flybridge.

## Fuel system

---

- 4 aluminum fuel tanks :
  - o 1300 l total (343 US Gal), under floors forward of the engine rooms bulkheads
  - o 1750 l total (462 US Gal), under floors forward of the roof bulkheads
- Electronic sensor for level monitoring on the Ipad yacht management system
- Fuel fillers caps and vents on aft cross beam
- Equipment includes :
  - o Fuel filter systems: pre-filter with water separator and primary filter
  - o Remote fuel shut off valve in aft cabins

## Fresh Water system

---

- Fresh water system: 4 tanks 240l, (63 US Gal) – 960 l (254 US Gal) total - Under cabin floors
- Fresh water tank levels are visible on the electronic management system IPAD at the wheelhouse dashboard.
- Fresh water circuit with 2 x 24V pressure pumps (located in engine compartments)
- 2 x 63 l (17 US Gal) electric water heaters linked to engines heat exchangers
- 1 transom shower (hot/cold) to starboard (2nd shower optional)

- 2 water fillers on deck
- Fresh water dock inlet (port side)

## **Black & Grey water system**

---

### **Black water**

- 1 holding tank per toilet 73 l (19 US Gal) with deck pump out or gravity drain to sea
- Electric TECMA fresh water toilet in each head

### **Grey water**

- Shower and washbasin drain to grey water collection box (automatic pump out with float switch)
- Sinks drain directly overboard

## **Bilge system**

---

- 24V AC electric pump control panel at nav station
- 1 electric bilge pump with auto float switch and manual override + bilge level alarm in each hull
- 2 manual bilge pumps for use from the cockpit
- Self-bailing cockpit following EC regulation
- 1 electric bilge pump in each engine room with auto float switch
- Bilge level alarm at nav station and helm station.

## **Electrical system**

---

### **General characteristics**

Voltage system as follows:

24V DC with grounded negative for:

- o Bilge systems
- o Steering systems
- o Engine room ventilation
- o Internal / External lights
- o Engine room lights
- o Navigation lights
- o Navigation systems
- o Mooring winches <sup>2</sup>
- o Sliding top and electrical flybridge door
- o Other small utilities

230V AC, single phase, 50Hz for:

- o Monitoring system
- o Air conditioning systems
- o Galley appliances
- o Battery chargers
- o Electrical outlets
- o Entertainment systems

- Other small utilities

### **Electrical panels**

Main electrical control panels are installed next to the nav station:

- AC Change over
- AC breakers for Comfort, Power and Aircon bus.
- Battery switches
- Navigation system switch
- Multiplex modules
- Main ON/OFF switches for DC equipment

Secondary electrical panels are installed in all the areas of the yacht.

- DC breakers panels in port and starboard hull

### **230V AC Power sources**

#### **Shore Power**

- One 230V AC, 63A shore in the transom
- Power sources are protected by breakers

Each shore power line has a multi-meter (Volt, Amp, Watt, frequency).

Option:

- A second shore power comes with the air-conditioning option: 230V AC, 63A shore inlets

#### **Generator**

One 7Kva ONAN generators, 230V AC, 50Hz, 24V DC starter, with sound shield box and electronic control panel located in the genset room.

Power sources are protected by breakers.

Option:

- Upgrade to 19 Kva ONAN generator, 230 AC, 50 Hz, 24 DC starter, with sound shield box.
- Additional 9Kva FISHER PANDA generator, 230 AC, 50 Hz, 24 DC starter, with sound shield box can be installed in the port engine compartment

#### **Inverters**

One 24/230V 2000 W inverter that supplies standard galley appliances as the main fridge and optional appliance as the salon entertainment system.

Option:

- Pack for 2 inverters 24/230V 5000 W each
- Pack for 3 inverters 24/110V 3000 W each

### **230V AC distribution**

The AC distribution is split in three circuits: DOMESTIC – POWER – AIRCON

DOMESTIC:

- SOCKETS (Salon, cabins and technical compartments)
- Microwave
- Icemaker
- Dishwasher
- Washing machine
- Stove

- TV
- Salon entertainment system
- Fridge & freezer
- Galley hob

**POWER:**

- Battery chargers
- Water heaters
- Water maker
- Dive compressor
- Microwave

**AIRCON:**

- Air handlers
- Compressors
- Sea water pump

Each appliance is protected by magneto/thermal breakers.

**24V DC Power sources****Batteries**

- Group of 24V AGM batteries of 840Amp for services
- Group of 2 x 12V AGM batteries of 48Amp for port engine
- Group of 2 x 12V AGM batteries of 48Amp for starboard engine
- 12V AGM battery of 48Amp for main generator

**Battery chargers (option)**

- 2 x 24V 100 Amp battery charger for service batteries
- 12V 53Amp battery charger for main generator

**Alternators**

- 24V 110Amp engine alternators are connected via load repartitor to
  - o service batteries
  - o engine batteries

**Monitoring system****Saloon dashboard display**

- IPAD displays.
- Fresh water level indicators and alarms.
- Fuel level indicators, alarms and management
- Service battery indicators (Volt, Amp IN/OUT, Charge level)
- 230V AC Source selection page with Volt, Amp, Watt, frequency.
- Generators batteries switch control, voltage indicator, Start/Stop control.
- Navigation lights control and monitoring
- Interior/Exterior lighting control and monitoring (except heads and bed lights)
- Electronics control
- System status: Lighting system & Multiplex system monitoring and alarm status

**Lighting**

---

**Engine & Generator compartment**

- 2 Neon lights 24V DC are installed in the engine and generator compartment.

**Master, VIP and Guests cabins**

- LED spotlights and strip LED in the ceiling
- Bed lights
- Courtesy strip LED under shelves
- Lights switches with dimmers close to the entrance door and near the bed

**Saloon**

- LED spotlights and strip power LED in the ceiling
- Lights switches with dimmers by the entrance door, companion way and nav station

**Galley**

- LED spotlights and strip power LED under furniture
- Lights switches with dimmers

**Bathrooms**

- LED spotlights

**Exteriors**

- LED spotlights LED spotlights
- Courtesy LED spotlights around the floor of the external deck and the floor of the fly bridge, transom (option)
- Lights switches by the entrance door and in the electronic management system IPAD

**Venting and extraction system**

---

**Interiors ventilation**

- Each cabin and each head has at least one natural ventilation
- The owner head is equipped with a toilet air extractor with dedicated control.

**Engine Room Ventilation**

- 2 x electrical fans 24V DC
- Engine room ventilation system control is connected to each engine.

**External layout and equipment**

---

**Flybridge**

- External staircase with teak steps
- Aluminum access hatch to flybridge (Electrical option)
- Plexiglas and stainless steel windscreen
- Stainless steel protection pulpit and handrails
- Fiberglass arch, with stainless steel bimini on helm stations, and stainless steel support for:
  - o navigation lights
  - o radar and antennas equipment
  - o horn
  - o flybridge lights
- 2 helm stations including:
  - o 1 wheel each
  - o 1 compass each



- windlass control and chain counter on port side
- Cushions for settees + backrest
- Engine throttles and control panel on port side
- Horn, search light, and others switches for deck systems.

Option: Engine throttles on starboard helm stations

- U-shape sofas with large capacity storage on starboard side. (Settee and sun lounging cushions are optional)
  - cup holders
  - small storage
- Teak tables for 10 people with stainless steel leg
- Sunbathing (Settee and sun lounging cushions are optional)
- Wet bar with:
  - sink, hot and cold water supply
  - storages
  - cup holders
  - dustbin
  - fridge (option)
  - ice maker (option)

#### **Aft cockpit**

- Teak floor
- Saloon door in stainless steel and tempered glass
- C-shape sofas with large capacity storage on starboard side. (Settee and sun lounging cushions are optional)
- Teak table for 10 people with stainless steel legs
- Furniture on port side with:
  - sink, hot and cold water supply
  - cup holders
  - storages
  - dustbin
  - fridge (53 L, 14 US Gal)
  - ice maker (option)
  - barbecue (option)
- 2 storages in cockpit ceiling
- 3 aluminum folding chairs

#### **Aft cockpit**

- Aft crossbeam with 4 storage lockers
- sun lounging area, (Settee and sun lounging cushions are optional)
- Dedicated storage for 2 X 10 person life raft

#### **Foredeck**

- 1 deck hatch for technical compartment access :
  - house battery bank
  - generator 7 kva
  - chargers (opt.)
  - Inverters, (std and opt.)
- 3 deck lockers 2 to port and 1 to starboard, dedicated to dive compressor (opt.)
- Chain locker to starboard of the windlass
- 2000W 24V electric windlass on deck with horizontal gipsy (14mm chain) and remote control.
- Composite longitudinal compression beam

**Bow compartments**

- Access through a deck hatch
- Stainless steel ladder

**Openings**

---

- All windows in grey tinted Plexiglas
- Central roof window in grey tinted glass
- Recessed Lewmar deck hatches
- Lewmar integrated port holes
- Plexiglas fixed hull windows
- Plexiglas salon windows
- Safety glass salon door with black aluminum frame

**Equipment and finishing and internal layout**

---

**Interior finish:**

*The following specifications may change depending on the chosen layout version*

- Furnitures and bulkheads in Alpi oak
- Milano laminated floor
- Ceilings in vinyl
- Venetians blinds
- Doors with leather insert, (Testa di moro)
- Salon tables in alpi oak with leather insert (Tokyo Brown) and stainless steel legs
- Sofa and pillows in fabric (Grey linen)
- 2 Leather chairs (Testa di moro)
- Counter of saloon furnitures in leather, (Tokyo Brown)
- Counter top of most cabins furniture in leather imitation (Mocassin)
- Cupboards and drawers handles in stainless steel and leather (Tokyo Brown)
- Bed tables doors in leather imitation (Mocassin)
- Bed head in fabric, (Truffle brown)
- Floor in teak for shower and heads' floor
- Galley counter in Corian (Medea – Dark grey)

Option: Alpi TEAK MAT or GLOSSY

- Furnitures and bulkheads in Alpi teak
- Bleached oak laminated floor
- Ceilings in white leather imitation
- Venetians blinds
- Doors with leather insert, (Tokyo Brown)
- Salon tables in alpi teak with leather insert (Ivory) and stainless steel legs
- Sofa and pillows in fabric (Marine linen)
- Leather chairs (Ghiaccio)
- Counter of saloon furnitures in leather, (Ivory)
- Counter top of most cabins furniture in leather imitation (Muslin)
- Cupboards and drawers handles in stainless still and leather (Tokyo Brown)
- Bed tables doors in leather imitation (Muslin)
- Bed head in fabric, (Brown pepper)
- Floor in teak for shower and heads' floor
- Galley counter in Corian (Cameo white)

**Five different layouts accommodation:**

- 4 cabins, 4 heads - Lateral galley
- 5 cabins, 5 heads - Lateral galley
- 4 cabins, 4 heads - Central galley
- 5 cabins, 5 heads - Central galley
- 6 cabins, 6 heads - Central galley

**Mattress and upholstery**

- Cabins mattresses: marine mattress made of multi-layer alveolar foam with several densities (thickness 130mm)
- Mattresses designed to improve comfort for a deeper sleep
- Mattresses treatment: anti-microbial, anti-bacterial, non-allergenic, anti-dust mite
- Standard upholstery as indicated on Lagoon sample book
- Synthetic fabrics adapted to marine environment:
  - Washable (40°C)
  - U.V. resistant
  - Water repellent, with anti-stain treatment

<b>4 CABINS, 4 HEADS - LATERAL GALLEY</b>
---



### Main deck – Saloon

- Access from the cockpit through sliding & locking door
- Storage under floors with hinged panels and lifting arm
- 2 opening hatches on the front port and starboard windows
- 4 Companionways

### Port side

- “L” shape sofa (upholstery to be selected)
- Cabinet forward of the settee including
  - o Storage at the front
  - o Bottle storage space
- TV cabinet with up/down lifting mechanism for a 40" LCD TV (option)
- 1 X 220 V outlet

### Starboard side

- “L” shape sofa (upholstery to be selected by client )
- 2 leather chairs for dining table
- 2 coffee tables with leather insert convertible into one large dining table (electrical pedestal)
- 1X 220 V outlet
- Cabinet with shelves on forward bulkhead
- Direct LED lights on ceilings

### **Nav station**

- Instrument console in leather for electronic equipment
- Chart top in leather
- IPAD (See section 8 - Saloon dashboard display)
- Horn, windscreen wipers switches
- 1 X 220 V outlet
- Locker under chart table (Technical access to electrical equipment)
- Storage on port side of the wheelhouse
- Storage and electrical main panel on starboard side of the wheelhouse, (See section 8)

- 1 leather lounge chair
- Full equipped wheelhouse: (option)
  - o Leather seat, manually moved (up/down) depending on the seating arrangement selected
  - o Wheel
  - o Main engines throttles
  - o Key switches for port and starboard engines

## **PORTISDE HULL**

### **Galley**

- Access from cockpit through sliding glass door and steps
- Access from the salon through gangway
- 2 opening deck hatches

### Outboard side

- CORIAN countertop (Medea – Dark grey)
- Stainless steel double sink under countertops with hot/cold fresh water mixer tap
- Liquid soap dispenser
- Storage with drawers under cooking top and sink
- 2 Waste bins under countertop
- Galley equipment includes:
  - o Fridge and freezer 220V 345 l + 179 l (91 + 47 US Gal) with ice maker
  - o Dishwasher (option)
  - o Washer/dryer (option)
- 2 X 220 V outlets

### Inboard side

- CORIAN countertop (Medea – Dark grey)
- Galley equipment includes:
  - o Induction stove
  - o Extractor
  - o Electrical oven
  - o Microwave oven (option)
- Upper storage cupboards
- Lower storage cupboards with drawers and shelves
- 2 X 220 V outlets

### **Amidships cabin**

- Access from the salon via forward gangway
- Minimum headroom 2.05m (6'9" )
- Queen size bed (2,05 m/6'9" X 1,60 m/5'3") with side access and wood slats under mattress
- 2 large drawers under bed
- Bedside storage with top s/s insert and imitation leather finishing
- Hanging locker with shelves on inner hull
- Shelves on hull side
- 1 Opening deck hatches with mosquito screens and blinds
- PMMA fixed hull windows with integrated opening porthole
- 2 x 220V outlets
- General cabin lighting with switches at the entrance and by bed sides + reading lights.

### **Amidships bathroom**

- Direct access from cabin

- Minimum headroom 2.05m (6'9" )
- Solid resin countertop with built in washbasin ("Ice white" colour)
- Separate shower with glass and stainless steel door
- Teak floors in bathroom and shower
- Vanity cabinet and mirror
- Electrical fresh water toilet
- 1 opening deck hatch with mosquito screen and blind

#### **Forward cabin**

- Access from the salon via forward gangway
- Minimum headroom 2.05m (6'9" )
- Queen size bed (2,05 m/6'9" X 1,60 m/5'3") with side access and wood slats under mattress
- 2 large drawers under bed
- Bedside storage with top s/s insert and imitation leather finishing
- Hanging locker with shelves
- Storage locker on outboard side
- Shelves on hull side
- 1 opening deck hatches with mosquito screens and blinds
- PMMA fixed hull windows with integrated opening porthole
- 2 x 220V outlets
- General cabin lighting with switches at the entrance and by bed sides + reading lights.

#### **Forward bathroom**

- Direct access from cabin
- Minimum headroom 2.05m (6'9" )
- Solid resin countertop with built in washbasin ("Ice white" colour)
- Separate shower with glass and stainless steel door
- Teak floors in bathroom and shower
- Vanity cabinet and mirror
- Electrical fresh water toilet
- 1 opening deck hatch with mosquito screen and blind

### **STARBOARD HULL**

#### **Master cabin**

- Access from the salon with private door
- Glass sliding access door for direct access to starboard side transom
- Minimum headroom 2.05m (6'9" )
- Queen size bed (2,05 m/6'9" X 1,60 m/5'3") with side access and wood slats under mattress
- 2 large storage drawers under bed
- Bedside storage with top s/s insert and imitation leather finishing
- Large dressing cabinet with 2 lit wardrobes, 4 closets with shelves and 6 drawers
- Bookshelf and storage area next to dressing cabinet
- Shelves on hull side
- Vanity / desk with storage and shelves on hull side
- Sofa against hull side with side shelf and lower storage area
- Large mirror against sofa
- 3 opening deck hatches with mosquito screens and blinds
- PMMA fixed hull windows with integrated opening porthole
- 3 x 220V outlets
- General cabin lighting with switches at the entrance and by bed sides + reading lights.

**Master bathroom**

- Corian (Medea) countertop with built-in washbasin
- Separate shower with glass and stainless steel door
- Teak floors in bathroom and shower
- Storage and mirror
- PMMA fixed hull windows with integrated opening porthole

**Master private WC**

- Fresh water electric head
- Electrical extractor

**VIP cabin**

- Access from the salon with private door
- Minimum headroom 2.05m (6'9" )
- Queen size bed (2,05 m/6'9" X 1,60 m/5'3") with side access and wood slats under mattress
- 2 large drawers under bed
- Bedside storage with top s/s insert and imitation leather finishing
- Double hanging locker with lower storage and drawers on hull side
- Bookshelf on hull side
- Storage on hull side
- Desk with storage and shelf on hull side
- 1 Opening deck hatches with mosquito screens and blinds
- PMMA fixed hull windows with integrated opening porthole
- 2 x 220V outlets
- General cabin lighting with switches at the entrance and by bed sides + reading lights.

**VIP bathroom**

- Direct access from cabin
- Minimum headroom 2.05m (6'9" )
- Solid resin countertop with built in washbasin ("Ice white" colour)
- Separate shower with glass and stainless steel door
- Teak floors in bathroom and shower
- Vanity cabinet and mirror
- Electrical fresh water toilet
- Opening deck hatch with mosquito screen and blind

<b>5 CABINS, 5 HEADS - LATERAL GALLEY</b>
---



### Main deck – Saloon

- Access from the cockpit through sliding & locking door
- Storage under floors with hinged panels and lifting arm
- 2 opening hatches on the front port and starboard windows
- 4 Companionways

#### Port side

- “L” shape sofa (upholstery to be selected)
- Cabinet forward of the settee including
  - o Storage at the front
  - o Bottle storage space
- TV cabinet with up/down lifting mechanism for a 40" LCD TV (option)
- 1 X 220 V outlet

#### Starboard side

- “L” shape sofa (upholstery to be selected by client )
- 2 leather chairs for dining table
- 2 coffee tables with leather insert convertible into one large dining table (electrical pedestal)
- 1X 220 V outlet
- Cabinet with shelves on forward bulkhead
- Direct LED lights on ceilings

### Nav station

- Instrument console in leather for electronic equipment
- Chart top in leather
- IPAD (See section 8 - Saloon dashboard display)
- Horn, windscreen wipers switches
- 1 X 220 V outlet
- Locker under chart table (Technical access to electrical equipment)
- Storage on port side of the wheelhouse
- Storage and electrical main panel on starboard side of the wheelhouse, (See section 8)
- 1 leather lounge chair
- Full equipped wheelhouse: (option)



- Leather seat, manually moved (up/down) depending on the seating arrangement selected
- Wheel
- Main engines throttles
- Key switches for port and starboard engines

## **PORTISDE HULL**

### **Galley**

- Access from cockpit through sliding glass door and steps
- Access from the salon through gangway
- 2 opening deck hatches

### Outboard side

- CORIAN countertop (Medea – Dark grey)
- Stainless steel double sink under countertops with hot/cold fresh water mixer tap
- Liquid soap dispenser
- Storage with drawers under cooking top and sink
- 2 Waste bins under countertop
- Galley equipment includes:
  - Fridge and freezer 220V 345 l + 179 l (91 + 47 US Gal) with ice maker
  - Dishwasher (option)
  - Washer/dryer (option)
- 2 X 220 V outlets

### Inboard side

- CORIAN countertop ((Medea – Dark grey)
- Galley equipment includes:
  - Induction stove
  - Extractor
  - Electrical oven
  - Microwave oven (option)
- Upper storage cupboards
- Lower storage cupboards with drawers and shelves
- 2 X 220 V outlets

### **Amidships cabin**

- Access from the salon via forward gangway
- Minimum headroom 2.05m (6'9" )
- Queen size bed (2,05 m/6'9" X 1,60 m/5'3") with side access and wood slats under mattress
- 2 large drawers under bed
- Bedside storage with top s/s insert and imitation leather finishing
- Hanging locker with shelves on inner hull
- Shelves on hull side
- 1 Opening deck hatches with mosquito screens and blinds
- PMMA fixed hull windows with integrated opening porthole
- 2 x 220V outlets
- General cabin lighting with switches at the entrance and by bed sides + reading lights.

### **Amidships bathroom**

- Direct access from cabin
- Minimum headroom 2.05m (6'9" )
- Solid resin countertop with built in washbasin ("Ice white" colour)

- Separate shower with glass and stainless steel door
- Teak floors in bathroom and shower
- Vanity cabinet and mirror
- Electrical fresh water toilet
- 1 Opening deck hatch with mosquito screen and blind

**Forward cabin**

- Access from the salon via forward gangway
- Minimum headroom 2.05m (6'9" )
- Queen size bed (2,05 m/6'9" X 1,60 m/5'3") with side access and wood slats under mattress
- 2 large drawers under bed
- Bedside storage with top s/s insert and imitation leather finishing
- Hanging locker with shelves
- Storage locker on outboard side
- Shelves on hull side
- 1 opening deck hatches with mosquito screens and blinds
- PMMA fixed hull windows with integrated opening porthole
- 2 x 220V outlets
- General cabin lighting with switches at the entrance and by bed sides + reading lights.

**Forward bathroom**

- Direct access from cabin
- Minimum headroom 2.05m (6'9" )
- Solid resin countertop with built in washbasin ("Ice white" colour)
- Separate shower with glass and stainless steel door
- Teak floors in bathroom and shower
- Vanity cabinet and mirror
- Electrical fresh water toilet
- 1 Opening deck hatch with mosquito screen and blind

**STARBOARD HULL****Aft cabin**

- Access from the salon via aft gangway
- Large glass sliding access door for direct access to cockpit and starboard side transom
- Retractable stainless steel lather
- Minimum headroom 2.05m (6'9" )
- Queen size bed (2,05 m/6'9" X 1,60 m/5'3") with side access and wood slats under mattress
- 2 large drawers under bed
- Bedside storage with top s/s insert and imitation leather finishing
- Double hanging locker with lower storage and drawers on interior hull side
- Bookshelf on hull side
- Opening deck hatches with mosquito screens and blinds
- PMMA fixed hull windows with integrated opening porthole
- 2 x 220V outlets
- General cabin lighting with switches at the entrance and by bed sides + reading lights.

**Aft bathroom**

- Direct access from cabin
- Minimum headroom 2.05m (6'9" )

- Solid resin countertop with built in washbasin ("Ice white" colour)
- Separate shower with glass and stainless steel door
- Teak floors in bathroom and shower
- Vanity cabinet and mirror
- Electrical fresh water toilet
- 1 opening deck hatch with mosquito screen and blind

#### **Amidships cabin**

- Access from the salon via aft gangway
- Minimum headroom 2.05m (6'9" )
- Queen size bed (2,05 m/6'9" X 1,60 m/5'3") with side access and wood slats under mattress
- 2 large drawers under bed
- Bedside storage with top s/s insert and imitation leather finishing
- Hanging locker with shelves on inner hull side
- Shelves on hull side
- 1 opening deck hatches with mosquito screens and blinds
- PMMA fixed hull windows with integrated opening porthole
- 2 x 220V outlets
- General cabin lighting with switches at the entrance and by bed sides + reading lights.

#### **Amidships bathroom**

- Direct access from cabin
- Minimum headroom 2.05m (6'9" )
- Solid resin countertop with built in washbasin
- Separate shower with glass and stainless steel door
- Teak floors in bathroom and shower
- Vanity cabinet and mirror
- Electrical fresh water toilet
- 1 Opening deck hatch with mosquito screen and blind

#### **Forward cabin**

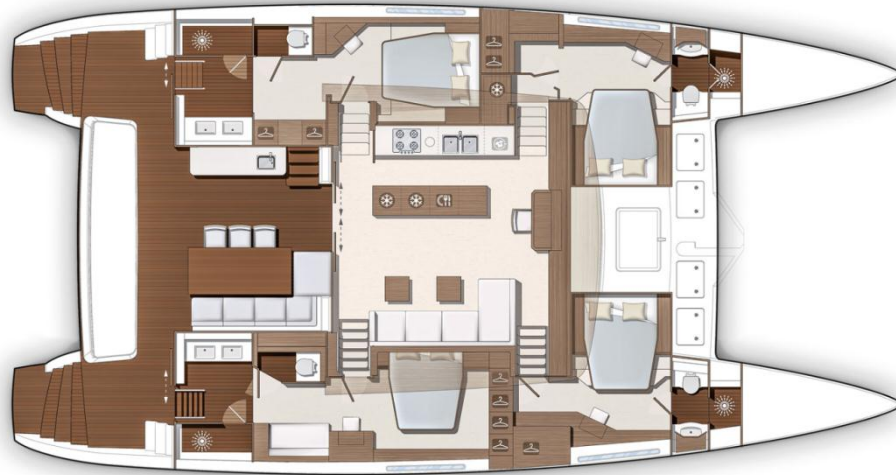
- Access from the salon via forward gangway
- Minimum headroom 2.05m (6'9" )
- Queen size bed (2,05 m/6'9" X 1,60 m/5'3") with side access and wood slats under mattress
- 2 large drawers under bed
- Bedside storage with top s/s insert and imitation leather finishing
- Hanging locker with shelves
- Storage locker on outboard side
- Shelves on hull side
- 1 Opening deck hatches with mosquito screens and blinds
- PMMA fixed hull windows with integrated opening porthole
- 2 x 220V outlets
- General cabin lighting with switches at the entrance and by bed sides + reading lights.

#### **Forward bathroom**

- Direct access from cabin
- Minimum headroom 2.05m (6'9" )
- Solid resin countertop with built in washbasin ("Ice white" colour)
- Separate shower with glass and stainless steel door
- Teak floors in bathroom and shower
- Vanity cabinet and mirror

- Electrical fresh water toilet
- 1 opening deck hatch with mosquito screen and blind

<b>4 CABINS, 4 HEADS - CENTRAL GALLEY</b>
---



### Main deck – Saloon

- Access from the cockpit through sliding & locking door with latching mechanism inside and out. Half way latching points
- Storage under floors with hinged panels and lifting arm
- 2 opening hatches on the front port and starboard windows
- 4 Companionway steps port and stbd, bow and stern, behind and forward main bulkhead.

### Starboard side

- “L” shape sofa (upholstery to be selected by client )
- 2 leather lounge chairs for dining table
- 2 coffee tables with leather insert convertible into one large dining table (electrical pedestal)
- 1X 220 V outlet
- Cabinet with shelves on forward bulkhead
- Direct LED lights on ceilings

### **Nav station**

- Instrument console in leather for electronic equipment
- Chart top in leather on port and starboard side of the wheelhouse
- IPAD (See section 8 - Saloon dashboard display)
- Horn, windscreen wipers switches
- 1 X 220 V outlet
- Storage locker under chart table (Technical access to electrical equipment)
- Storage on port side of the wheelhouse
- Storage and electrical main panel on starboard side of the wheelhouse, (See section 8)
- 1 leather lounge chairs
- Full equipped wheelhouse: (option)
  - o Leather seat, manually moved (up/down) depending on the seating arrangement selected
  - o Steering wheel in leather
  - o Main engines throttles

## Galley

### Port side:

- CORIAN countertop (Medea – Dark grey)
- Stainless steel double sink under countertops with hot/cold fresh water mixer tap
- Liquid soap dispenser
- Storage with drawers under cooking top and sink
- Waste bins under countertop
- Storage shelves above the sink and main cooking top
- Galley equipment includes:
  - o Induction stove
  - o Extractor
  - o Electrical oven
  - o Washer/dryer (option)
  - o Microwave oven (option)
- 2 X 220V outlets

### Central area:

- CORIAN countertop ((Medea – Dark grey)
- Lower storage with drawers and shelves
- Galley equipment includes:
  - o 130 lt stainless still fridge under countertop
  - o Dishwasher (option)
  - o 110lt stainless still freezer under countertop (option)
- TV cabinet with up/down lifting mechanism for a 40" LCD TV (option)
- 3 X 220V outlets

### Back galley, (Port side fwd companionway):

- 200 l refrigerator (upper space) and 60 l. freezer (lower space), icemaker.

## **PORTSIDE HULL**

### **Aft VIP cabin**

- Access from the salon with private door
- Glass sliding access door for direct access to port side transom
- Minimum headroom 2.05m (6'9" )
- Queen size bed (2,05 m/6'9" X 1,60 m/5'3") with side access and wood slats under mattress
- 2 large storage drawers under bed
- Bedside storage with top s/s insert and imitation leather finishing
- Large dressing cabinet with 2 lit wardrobes, 4 closets with shelves and 6 drawers
- Bookshelf and storage area next to dressing cabinet
- Shelves on hull side
- Vanity / desk with storage and shelves on hull side
- 3 opening deck hatches with mosquito screens and blinds
- PMMA fixed hull windows with integrated opening porthole
- 3 x 220V outlets
- General cabin lighting with switches at the entrance and by bed sides + reading lights.

### **Aft VIP bathroom**

- Solid resin countertop ("Ice white" colour) with built-in washbasin
- Separate shower with glass and stainless steel door
- Teak floors in bathroom and shower
- Storage and mirror

- PMMA fixed hull windows with integrated opening porthole

**Aft VIP private WC**

- Fresh water electric head
- Electrical extractor

**Forward VIP cabin**

- Access from the salon via forward gangway
- Minimum headroom 2.05m (6'9" )
- Queen size bed (2,05 m/6'9" X 1,60 m/5'3") with side access and wood slats under mattress
- 2 large drawers under bed
- Bedside storage with top s/s insert and imitation leather finishing
- 2 hanging lockers
- Storages with shelves
- Set of large drawers
- Book shelves on hull side
- Vanity desk on hull side
- 1 Opening deck hatches with mosquito screens and blinds
- PMMA fixed hull windows with integrated opening porthole
- 2 x 220V outlets
- General cabin lighting with switches at the entrance and by bed sides + reading lights.

**Forward VIP bathroom**

- Direct access from cabin
- Minimum headroom 2.05m (6'9" )
- Solid resin countertop with built in washbasin ("Ice white" colour)
- Separate shower with glass and stainless steel door
- Teak floors in bathroom and shower
- Vanity cabinet and mirror
- Electrical fresh water toilet
- 1 opening deck hatch with mosquito screen and blind

**STARBOARD HULL****Master cabin**

- Access from the salon with private door
- Glass sliding access door for direct access to starboard side transom
- Minimum headroom 2.05m (6'9" )
- Queen size bed (2,05 m/6'9" X 1,60 m/5'3") with side access and wood slats under mattress
- 2 large storage drawers under bed
- Bedside storage with top s/s insert and imitation leather finishing
- Large dressing cabinet with 2 lit wardrobes, 4 closets with shelves and 6 drawers
- Bookshelf and storage area next to dressing cabinet
- Shelves on hull side
- Vanity / desk with storage and shelves on hull side
- Sofa against hull side with side shelf and lower storage area
- Large mirror against sofa
- 3 opening deck hatches with mosquito screens and blinds
- PMMA fixed hull windows with integrated opening porthole
- 3 x 220V outlets
- General cabin lighting with switches at the entrance and by bed sides + reading lights.

**En-suite bathroom**

- Solid resin countertop ("Ice white" colour) with built-in washbasin
- Separate shower with glass and stainless steel door
- Teak floors in bathroom and shower
- Storage and mirror
- PMMA fixed hull windows with integrated opening porthole

**En-suite private WC**

- Fresh water electric head
- Electrical extractor

**Forward VIP cabin**

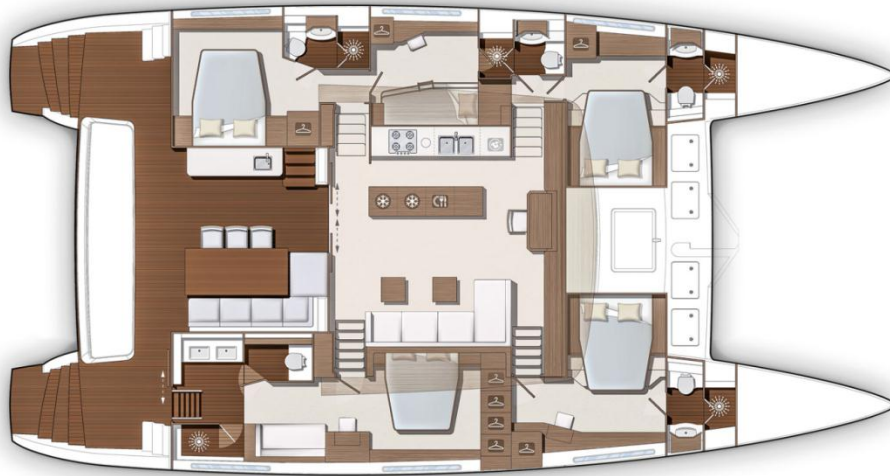
- Access from the salon with private door
- Minimum headroom 2.05m (6'9" )
- Queen size bed (2,05 m/6'9" X 1,60 m/5'3") with side access and wood slats under mattress
- 2 large drawers under bed
- Bedside storage with top s/s insert and imitation leather finishing
- Double hanging locker with lower storage and drawers on hull side
- Bookshelf on hull side
- Storage on hull side
- Desk with storage and shelf on hull side
- 1 Opening deck hatches with mosquito screens and blinds
- PMMA fixed hull windows with integrated opening porthole
- 2 x 220V outlets
- General cabin lighting with switches at the entrance and by bed sides + reading lights.

**Forward VIP bathroom**

- Direct access from cabin
- Minimum headroom 2.05m (6'9" )
- Solid resin countertop with built in washbasin ("Ice white" colour)
- Separate shower with glass and stainless steel door
- Teak floors in bathroom and shower
- Vanity cabinet and mirror
- Electrical fresh water toilet
- Opening deck hatch with mosquito screen and blind



<b>5 CABINS, 5 HEADS - CENTRAL GALLEY</b>
---



### Main deck – Saloon

- Access from the cockpit through sliding & locking door with latching mechanism inside and out. Half way latching points
- Storage under floors with hinged panels and lifting arm
- 2 opening hatches on the front port and starboard windows
- 4 Companionway steps port and stbd, bow and stern, behind and forward main bulkhead.

### Starboard side

- "L" shape sofa (upholstery to be selected by client )
- 2 leather lounge chairs for dining table
- 2 coffee tables with leather insert convertible into one large dining table (electrical pedestal)
- 1X 220 V outlet
- Cabinet with shelves on forward bulkhead
- Direct LED lights on ceilings
- 

### Nav station

- Instrument console in leather for electronic equipment
- Chart top in leather on port and starboard side of the wheelhouse
- IPAD (See section 8 - Saloon dashboard display)
- Horn, windscreen wipers switches
- 1 X 220 V outlet
- Storage locker under chart table (Technical access to electrical equipment)
- Storage on port side of the wheelhouse
- Storage and electrical main panel on starboard side of the wheelhouse, (See section 8)
- 1 leather lounge chairs
- Full equipped wheelhouse: (option)
  - o Leather seat, manually moved (up/down) depending on the seating arrangement selected
  - o Steering wheel in leather
  - o Main engines throttles

**Galley**Port side:

- CORIAN countertop ((Medea – Dark grey)
- Stainless steel double sink under countertops with hot/cold fresh water mixer tap
- Liquid soap dispenser
- Storage with drawers under cooking top and sink
- Waste bins under countertop
- Storage shelves above the sink and main cooking top
- Galley equipment includes:
  - o Induction stove
  - o Extractor
  - o Electrical oven
  - o Washer/dryer (option)
  - o Microwave oven (option)
- 2 X 220V outlets

Central area:

- CORIAN countertop ((Medea – Dark grey)
- Lower storage with drawers and shelves
- Galley equipment includes:
  - o 130 lt stainless still fridge under countertop
  - o Dishwasher (option)
  - o 110lt stainless still freezer under countertop (option)
- TV cabinet with up/down lifting mechanism for a 40" LCD TV (option)
- 3 X 220V outlets

Back galley, (Port side fwd companionway):

- 200 l refrigerator (upper space) and 60 l. freezer (lower space), icemaker.

**PORTSIDE HULL****Aft cabin**

- Access from the salon via aft gangway
- Large glass sliding access door for direct access to cockpit and starboard side transom
- Retractable stainless steel leather
- Minimum headroom 2.05m (6'9" )
- Queen size bed (2,05 m/6'9" X 1,60 m/5'3") with side access and wood slats under mattress
- 2 large drawers under bed
- Bedside storage with top s/s insert and imitation leather finishing
- Double hanging locker with lower storage and drawers on interior hull side
- Bookshelf on hull side
- 1 opening deck hatches with mosquito screens and blinds
- PMMA fixed hull windows with integrated opening porthole
- 2 x 220V outlets
- General cabin lighting with switches at the entrance and by bed sides + reading lights.

**Aft bathroom**

- Direct access from cabin
- Minimum headroom 2.05m (6'9" )
- Solid resin countertop with built in washbasin ("Ice white" colour)
- Separate shower with glass and stainless steel door
- Teak floors in bathroom and shower

- Vanity cabinet and mirror
- Electrical fresh water toilet
- 1 opening deck hatch with mosquito screen and blind

**Amidships cabin**

- Access from the salon via aft gangway
- Sliding door
- Minimum headroom 2.05m (6'9" )
- Bunk bed with two mattresses
- Storage underneath the bed
- Shelves on hull side
- Vanity / desk with storage and shelves on hull side
- 1 opening deck hatches with mosquito screens and blinds
- PMMA fixed hull windows with integrated opening porthole
- 2 x 220V outlets
- General cabin lighting with switches at the entrance and by bed sides + reading lights.

**Amidships bathroom**

- Direct access from cabin
- Minimum headroom 2.05m (6'9" )
- Solid resin countertop with built in washbasin ("Ice white" colour)
- Separate shower with glass and stainless steel door
- Teak floors in bathroom and shower stall
- Vanity cabinet and mirror
- Electrical fresh water toilet
- 1 opening deck hatch with mosquito screen and blind

**Forward cabin**

- Access from the salon via forward gangway
- Minimum headroom 2.05m (6'9" )
- Queen size bed (2,05 m/6'9" X 1,60 m/5'3") with side access and wood slats under mattress
- 2 large drawers under bed
- Bedside storage with top s/s insert and imitation leather finishing
- Hanging locker with shelves
- Storage locker on outboard side
- Shelves on hull side
- 1 Opening deck hatches with mosquito screens and blinds
- PMMA fixed hull windows with integrated opening porthole
- 2 x 220V outlets
- General cabin lighting with switches at the entrance and by bed sides + reading lights.

**Forward bathroom**

- Direct access from cabin
- Minimum headroom 2.05m (6'9" )
- Solid resin countertop with built in washbasin ("Ice white" colour)
- Separate shower with glass and stainless steel door
- Teak floors in bathroom and shower
- Vanity cabinet and mirror
- Electrical fresh water toilet
- 1 opening deck hatch with mosquito screen and blind

**STARBOARD HULL****Master cabin**

- Access from the salon with private door
- Glass sliding access door for direct access to starboard side transom
- Minimum headroom 2.05m (6'9" )
- Queen size bed (2,05 m/6'9" X 1,60 m/5'3") with side access and wood slats under mattress
- 2 large storage drawers under bed
- Bedside storage with top s/s insert and imitation leather finishing
- Large dressing cabinet with 2 lit wardrobes, 4 closets with shelves and 6 drawers
- Bookshelf and storage area next to dressing cabinet
- Shelves on hull side
- Vanity / desk with storage and shelves on hull side
- Sofa against hull side with side shelf and lower storage area
- Large mirror against sofa
- 3 opening deck hatches with mosquito screens and blinds
- PMMA fixed hull windows with integrated opening porthole
- 3 x 220V outlets
- General cabin lighting with switches at the entrance and by bed sides + reading lights.

**Master bathroom**

- Solid resin countertop ("Ice white" colour) with built-in washbasin
- Separate shower stall with Plexiglas door
- Teak floors in bathroom and shower
- Storage and mirror
- PMMA fixed hull windows with integrated opening porthole

**Master private WC**

- Fresh water electric head
- Electrical extractor

**Forward VIP cabin**

- Access from the salon with private door
- Minimum headroom 2.05m (6'9" )
- Queen size bed (2,05 m/6'9" X 1,60 m/5'3") with side access and wood slats under mattress
- 2 large drawers under bed
- Bedside storage with top s/s insert and imitation leather finishing
- Double hanging locker with lower storage and drawers on hull side
- Bookshelf on hull side
- Storage on hull side
- Desk with storage and shelf on hull side
- 1 opening deck hatches with mosquito screens and blinds
- PMMA fixed hull windows with integrated opening porthole
- 2 x 220V outlets
- General cabin lighting with switches at the entrance and by bed sides + reading lights.

**Forward VIP bathroom**

- Direct access from cabin
- Minimum headroom 2.05m (6'9" )
- Solid resin countertop with built in washbasin ("Ice white" colour)
- Separate shower with glass and stainless steel door

- Teak floors in bathroom and shower
- Vanity cabinet and mirror
- Electrical fresh water toilet
- Opening deck hatch with mosquito screen and blind

<b>6 CABINS, 6 HEADS - CENTRAL GALLEY</b>
---



### Main deck – Saloon

- Access from the cockpit through sliding & locking door with latching mechanism inside and out. Half way latching points
- Storage under floors with hinged panels and lifting arm
- 2 opening hatches on the front port and starboard windows
- 4 Companionway steps port and starboard, bow and stern, behind and forward main bulkhead.

### Starboard side

- “L” shape sofa (upholstery to be selected by client )
- 2 leather lounge chairs for dining table
- 2 coffee tables with leather insert convertible into one large dining table (electrical pedestal)
- 1X 220 V outlet
- Cabinet with shelves on forward bulkhead
- Direct LED lights on ceilings

### Nav station

- Instrument console in leather for electronic equipment
- Chart top in leather on port and starboard side of the wheelhouse
- IPAD (See section 8 - Saloon dashboard display)
- Horn, windscreen wipers switches
- 1 X 220 V outlet
- Storage locker under chart table (Technical access to electrical equipment)
- Storage on port side of the wheelhouse
- Storage and electrical main panel on starboard side of the wheelhouse, (See section 8)
- 1 leather lounge chairs
- Full equipped wheelhouse: (option)
  - o Leather seat, manually moved (up/down) depending on the seating arrangement selected
  - o Steering wheel in leather
  - o Main engines throttles

**Galley**Port side:

- CORIAN countertop ((Medea – Dark grey)
- Stainless steel double sink under countertops with hot/cold fresh water mixer tap
- Liquid soap dispenser
- Storage with drawers under cooking top and sink
- Waste bins under countertop
- Storage shelves above the sink and main cooking top
- Galley equipment includes:
  - o Induction stove
  - o Extractor
  - o Electrical oven
  - o Washer/dryer (option)
  - o Microwave oven (option)
- 2 X 220V outlets

Central area:

- CORIAN countertop ((Medea – Dark grey)
- Lower storage with drawers and shelves
- Galley equipment includes:
  - o 130 lt stainless still fridge under countertop
  - o Dishwasher (option)
  - o 110lt stainless still freezer under countertop (option)
- TV cabinet with up/down lifting mechanism for a 40" LCD TV (option)
- 3 X 220V outlets

Back galley, (Port side forward companionway):

- 200 l refrigerator (upper space) and 60 l. freezer (lower space), icemaker.

**PORTSIDE HULL****Aft cabin**

- Access from the salon via aft gangway
- Large glass sliding access door for direct access to cockpit and transom
- Retractable stainless steel leather
- Minimum headroom 2.05m (6'9" )
- Queen size bed (2,05 m/6'9" X 1,60 m/5'3") with side access and wood slats under mattress
- 2 large drawers under bed
- Bedside storage with top s/s insert and imitation leather finishing
- Double hanging locker with lower storage and drawers on interior hull side
- Bookshelf on hull side
- 1 opening deck hatches with mosquito screens and blinds
- PMMA fixed hull windows with integrated opening porthole
- 2 x 220V outlets
- General cabin lighting with switches at the entrance and by bed sides + reading lights.

**Aft bathroom**

- Direct access from cabin
- Minimum headroom 2.05m (6'9" )
- Solid resin countertop with built in washbasin ("Ice white" colour)
- Separate shower with glass and stainless steel door
- Teak floors in bathroom and shower
- Vanity cabinet and mirror

- Electrical fresh water toilet
- 1 opening deck hatch with mosquito screen and blind

**Amidships cabin**

- Access from the salon via aft gangway
- Sliding door
- Minimum headroom 2.05m (6'9" )
- Bunk bed with two mattresses
- Storage underneath the bed
- Shelves on hull side
- Vanity / desk with storage and shelves on hull side
- 1 opening deck hatches with mosquito screens and blinds
- PMMA fixed hull windows with integrated opening porthole
- 2 x 220V outlets
- General cabin lighting with switches at the entrance and by bed sides + reading lights.

**Amidships bathroom**

- Direct access from cabin
- Minimum headroom 2.05m (6'9" )
- Solid resin countertop with built in washbasin ("Ice white" colour)
- Separate shower with glass and stainless steel door
- Teak floors in bathroom and shower stall
- Vanity cabinet and mirror
- Electrical fresh water toilet
- 1 opening deck hatch with mosquito screen and blind

**Forward cabin**

- Access from the salon via forward gangway
- Minimum headroom 2.05m (6'9" )
- Queen size bed (2,05 m/6'9" X 1,60 m/5'3") with side access and wood slats under mattress
- 2 large drawers under bed
- Bedside storage with top s/s insert and imitation leather finishing
- Hanging locker with shelves
- Storage locker on outboard side
- Shelves on hull side
- 1 Opening deck hatches with mosquito screens and blinds
- PMMA fixed hull windows with integrated opening porthole
- 2 x 220V outlets
- General cabin lighting with switches at the entrance and by bed sides + reading lights.

**Forward bathroom**

- Direct access from cabin
- Minimum headroom 2.05m (6'9" )
- Solid resin countertop with built in washbasin ("Ice white" colour)
- Separate shower with glass and stainless steel door
- Teak floors in bathroom and shower
- Vanity cabinet and mirror
- Electrical fresh water toilet
- 1 opening deck hatch with mosquito screen and blind



**STARBOARD HULL****Aft cabin**

- Access from the salon via aft gangway
- Large glass sliding access door for direct access to cockpit and starboard side transom
- Retractable stainless steel lather
- Minimum headroom 2.05m (6'9" )
- Queen size bed (2,05 m/6'9" X 1,60 m/5'3") with side access and wood slats under mattress
- 2 large drawers under bed
- Bedside storage with top s/s insert and imitation leather finishing
- Double hanging locker with lower storage and drawers on interior hull side
- Bookshelf on hull side
- Opening deck hatches with mosquito screens and blinds
- PMMA fixed hull windows with integrated opening porthole
- 2 x 220V outlets
- General cabin lighting with switches at the entrance and by bed sides + reading lights.

**Aft bathroom**

- Direct access from cabin
- Minimum headroom 2.05m (6'9" )
- Solid resin countertop with built in washbasin ("Ice white" colour)
- Separate shower with glass and stainless steel door
- Teak floors in bathroom and shower
- Vanity cabinet and mirror
- Electrical fresh water toilet
- 1 opening deck hatch with mosquito screen and blind

**Amidships cabin**

- Access from the salon via aft gangway
- Minimum headroom 2.05m (6'9" )
- Queen size bed (2,05 m/6'9" X 1,60 m/5'3") with side access and wood slats under mattress
- 2 large drawers under bed
- Bedside storage with top s/s insert and imitation leather finishing
- Hanging locker with shelves on inner hull side
- Shelves on hull side
- 1 Opening deck hatches with mosquito screens and blinds
- PMMA fixed hull windows with integrated opening porthole
- 2 x 220V outlets
- General cabin lighting with switches at the entrance and by bed sides + reading lights.

**Amidships bathroom**

- Direct access from cabin
- Minimum headroom 2.05m (6'9" )
- Solid resin countertop with built in washbasin
- Separate shower with glass and stainless steel door
- Teak floors in bathroom and shower
- Vanity cabinet and mirror
- Electrical fresh water toilet
- 1 opening deck hatch with mosquito screen and blind

**Forward cabin**

- Access from the salon via forward gangway
- Minimum headroom 2.05m (6'9" )
- Queen size bed (2,05 m/6'9" X 1,60 m/5'3") with side access and wood slats under mattress
- 2 large drawers under bed
- Bedside storage with top s/s insert and imitation leather finishing
- Hanging locker with shelves
- Storage locker on outboard side
- Shelves on hull side
- 1 Opening deck hatches with mosquito screens and blinds
- PMMA fixed hull windows with integrated opening porthole
- 2 x 220V outlets
- General cabin lighting with switches at the entrance and by bed sides + reading lights.

**Forward bathroom**

- Direct access from cabin
- Minimum headroom 2.05m (6'9" )
- Solid resin countertop with built in washbasin ("Ice white" colour)
- Separate shower with glass and stainless steel door
- Teak floors in bathroom and shower
- Vanity cabinet and mirror
- Electrical fresh water toilet
- 1 opening deck hatch with mosquito screen and blind



162, quai de Brazza  
CS 81217  
33072 Bordeaux Cedex - France  
Tél. 33 + (0) 557 80 92 80  
E-mail : [info@cata-lagoon.com](mailto:info@cata-lagoon.com)  
**[www.cata-lagoon.com](http://www.cata-lagoon.com)**