

52 S

Technical specification

L A G O O N

**Contents**

---

TECHNICAL DATAS .....	3
CONSTRUCTION.....	4
SAILS AND RIGGINGS .....	4
HARDWARE .....	4
MOORING.....	4
VARIOUS EQUIPMENTS.....	5
MOTORISATION.....	5
PLUMBING.....	5
ELECTRICS .....	6
DECK LAYOUT .....	6
TRANSOM.....	6
AFT COCKPIT .....	6
HELM STATION .....	6
FORWARD COCKPIT.....	7
BOW LOCKERS .....	7
INTERIOR LAYOUTS.....	8
GENERALITIES.....	8
3 CABINS VERSION.....	9
4 CABINS VERSION.....	12
5 CABINS VERSION.....	16
6 CABINS VERSION.....	20

## TECHNICAL DATAS

---

Length over all LOA	15,84 m / 52'
Length	15,6 m / 51'2"
Beam over all	8,74 m / 28'3
Mast clearance	27,08 m / 88'1"
Draft	1,55 m / 5'1"
Displacement (ECC)	26,03t/ 57403 Lbs.
Full batten mainsail	97m <sup>2</sup> / 1044 sq.ft.
Square top mainsail (option)	107m <sup>2</sup> / 1151 sq.ft.
Self-tacking jib	59m <sup>2</sup> / 635 sq.ft.
Furling genoa (option)	70m <sup>2</sup> / 753 sq.ft.
Furling staysail (option)	44m <sup>2</sup> / 473 sq.ft.
Spinnaker (option)	255 m <sup>2</sup> / 2744 sq.ft.
Code 0 (option)	152 m <sup>2</sup> / 1636 sq.ft
Fresh water capacity	4 x 240L (4 x 63 US Gal) -> total 960L (253 US Gal)
Fuel capacity	2 x 496 l / 2 x 131 US gal -> total 992L (262 US Gal)
Engines	2 x 57 cv CR to 2 x 80 hp
Architects	Marc Van Peteghem & Vincent Lauriot Prevost
Interior Design	Nauta Design
Nb of berths	6 to 14
EC Certification	A: 14 ; B: 14 ; C: 16 ; D: 30

## US SPECIFICATIONS

*Only for boats sold in USA*

- 110V Electrical panel
- 110V outlets
- Gas propane circuit with solenoid valve

## CONSTRUCTION

---

- Building process: infused FRP and FRP composite with balsa core and polyester and high quality anti-osmotic resin. Hull bottom and keels in solid infused laminate
- Infused balsa core structural bulkheads
- White gel coat hulls
- White gel coat deck with non-diamond skid areas

## SAILS AND RIGGINGS

---

### SAILS

- 1 high roach mainsail in Dacron type double ply with battens and LAGOON logo
- 1 self-tacking jib in Dacron type double ply on manual furler with UV protective band

### RIGGING

- Anodized aluminum mast with track
- Double spreaders rig
- Anodized aluminum boom
- 2 encased shrouds
- 2 encased low shrouds
- 1 jib forestay with manual furler
- Adjustable lazy-jacks with spreaders
- Deck light on the mast

### RUNNING RIGGING

- 1 double purchase spectra mainsail halyard
- 1 spectra Genoa halyard with tension adjustment track at mast base.
- 1 boom topping lift
- 3 reefing lines
- Genoa sheets
- Mainsail sheet led back to helm station

## HARDWARE

---

- 1 electrical halyard winch 50.2 STEA for mainsail halyard and reefing lines (center of the helm station)
- 2 manual winches for halyards and cunninghams 50.2 STA (on portside and starboard of the helm station)
- Anodized aluminum crossbeam with mooring point for the jib furler, anchor roller and navigation lights

## MOORING

---

- Composite longitudinal crossbeam with avec integrated chain run and forestay chain plate
- 8 mooring cleats
- 2000W 12V electrical windlass on the deck, horizontal gypsy (chain 12mm) and wireless remote in the anchor locker
- Chain locker located on the starboard side of the windlass

## VARIOUS EQUIPMENTS

---

- Pushpits with on port with flag pole and buoy bracket
- Pulpits with wooden seats
- Height of the stanchions : 610 mm
- 2 ranges of life line

## MOTORISATION

---

- 2 diesel engines YANMAR 4JH57 57cv common rail sail drive
- 3 blades fixe propeller
- Sea water filter
- Electric engine throttles and control panel at the helm station
- 2 foam core spade rudders, stainless steel rudder shafts
- Epoxy rudder tubes
- Upper and lower self-aligning rudder bearings
- Full hydraulic steering system (1 hydraulic strut per rudder)
- Hydraulic central in the starboard engine compartment
- Ventilation of the engine compartment : natural suction and forced extraction in the aft transom
- Sound-proofing of the engine compartment
- Fuel circuit :
  - 2 aluminum tanks of 2 x 496 liters
  - Fuel filter systems
  - Fuel shut off valve
  - Gauge at the general control panel

## PLUMBING

---

### Fresh water circuit:

- Fresh water tank : 4 x 240L with gauge at the chart table
- Fresh water circuit with 1 main water group
- 60L electric water heater, 220V/engine exchanger for the 3, 4 and 5 cabins version
- 100L electric water heater, 220V/engine exchanger for the 3, 4 and 5 cabins version

### Grey water:

- Shower and washbasin drain to grey water tank and automatic pump
- Galley sinks drain directly overboard

### Black water:

- 1 holding tank in the owner cabin (73 liters) with deck pump out or gravity drain to sea

### Bilge pump circuit:

- 1 manual bilge pump in each hull and activated from the cockpit
- 1 manual pomp bilge pump in each bow locker and activated from the cockpit
- 1 automatic and electric bilge pump in each engine room
- Automatic and electric bilge pump in each hull + manual override + bilge level alarm in each hull
- Self-draining cockpit compliant to the EC certifications

## ELECTRICS

---

### Power circuit:

- 2 alternators 12V 80AH
- 2 gel start batteries 12V 48Ah
- 6 acid service batteries 12V 140Ah
- 50 Amp dock inlet in the aft transom

Batteries breaker in the cupboard of the starboard companionway

### Distribution Electric panel:

- 12V General distribution panel at the chart table with protection by circuit breaker
- 1 touch screen 4,3" to manage : lighting, battery level, fuel and water gauges, navigation lights

### Lighting:

- 12V LED outside lighting
- 12V LED inside lighting
- Lighting wirelessly with centralized management on touch screen at the chart table
- Navigation lights

## DECK LAYOUT

---

### TRANSOM

---

- Hot/cold deck shower on starboard
- Removable swim ladder with fixe s/s handle in the starboard transom
- Handrail on starboard and portside

### AFT COCKPIT

---

- Large cockpit usable as a deck salon, protected by a hard top bimini
- Cockpit flush to the salon
- Anti-skid composite cockpit floor
- "U" bench on starboard with 1 storage locker
- Removable polyester cockpit table an exchangeable with the salon table
- Cupboard on starboard side : trinket bowl under flap + access to the outside waste bin 20 L + storage with front door and shelves (essential equipment) (Ice maker option)
- Cupboard on portside side : cup holders + storage with front door and shelves (essential equipment) (Fridge option)
- 1 "Lazy boy" area with locker in the seat
- Access to the roof through a s/s staircase with wooden steps

### HELM STATION

---

- Composite staircases to access from the cockpit on portside, gas locker (13kg) and storage under the staircase
- Helmsman bench with 2 seats
- Leather covered s/s steering wheel diameter 900mm
- Instrumentation console
- Cup holder
- Storage on the side of the helm station with s/s lining

- Composite storage locker with flaps for the halyards storage (under the staircase to access to the roof, along the salon/cockpit bulkhead)
- Large sunbed on the roof

#### FORWARD COCKPIT

---

- « U » seating area
- Storage locker on portside
- Anchor locker on starboard
- 1 deck hatch to access to the technical compartment with the service batteries
- Trampoline with nylon thread

#### BOW LOCKERS

---

- Access through opening deck hatches
- S/s ladder
- White painting
- Lighting

## INTERIOR LAYOUTS

---

### GENERALITIES

---

- Interior woodwork in Alpi blond oak plywood
- Dark brown laminated floor (Milano)
- S/s handrail leather covered
- Fabric-covered plywood ceiling panels or fiberglass liners in the salon, cabins and wash rooms
- Fabric-covered plywood on hull liner in cabins

### Standing headroom

---

Salon :	2.15m
Cabin :	2.05 m
Bathroom :	2.05 m

### Mattress and upholstery

---

- Marine mattresses made of multi-layer alveolar foam with several densities (tick. 130mm)
- Mattresses treatment: anti-microbial, anti-bacterial, non-allergenic, anti-dust mite
- Standard upholstery as indicated on Lagoon sample book
- Synthetic fabrics adapted to marine environment:
  - washable (40°C)
  - U.V. resistant
  - water repellent, with anti-stain treatment
- Blackout curtains in the cabins and salon
- Mosquito screen and blinds for deck hatches

### Lighting

---

- 12V LED ceiling spotlights
- 12V LED reading lights headboard
- 12V LED reading lights at the chart table
- 12V lighting in the engine compartment

### Available version

---

- 3 cabins
- 4 cabins
- 5 cabins
- 6 cabins



## 3 CABINS VERSION

---



Version 3 cabins / 3 cabin version

### SALON

---

- Sliding door and window with aluminum locker for the access to the cockpit, can be locked open or closed
- Large varnished salon table exchangeable with the low table from the cockpit (option)
- 6 seats « L » bench on starboard
- Lockers under the bench
- 5 high cupboards with storage and shelves
- 4 under floor lockers
- Fabric covered steel pillar
- Wooden gunwale
- 4 opening hatches on the front windows

### CHART TABLE

---

- Large instrumentation console with panel to install the electronics
- Seat
- Desk with flaps
- 1 storage with 1 drawer and cupboard

### GALLEY

---

- « U » shape galley on portside
- Corian® « warm grey » countertop
- Double s/s sink with hot/cold mixer tap
- Storage under the sink
- 1 storage under the countertop with 1 fridge (104L) and 1 freezer (78L)
- 1 vertical sliding storage with 2 cutlery drawers and 1 high drawer
- 4 burners gas stove, base for pans
- Grill oven with s/s inside
- Flap under the oven
- Waste bin integrated in the countertop

- Integrated s/s dishes rest
- Unit with storage drawers (dishwasher option)
- High cupboards on portside (microwave option)
- 1 cabinet with 3 shelves in the companionway

## PORTSIDE HULL

---

### AFT CABIN

- Access from the transom through a gull-wing door with lock and handrail
- 1 double bed with lateral access (2.05 x 1.60 m)
- 2 bed nightstands, one with storage
- 1 under bed drawer
- Full high cupboard in 2 parts :
  - Upper part : 2 wardrobes + shelves
  - Lower part : shelves
- Desk with flap
- 3 drawers under the desk
- Desk height countertop along outside hull
- Bookshelves on 2 levels
- 1 low cupboard with shelves
- 1 opening porthole
- 2 opening deck hatches
- 1 hull fixe window in PMMA black silkscreen printing 910x423 mm with 1 integrated opening porthole

### AFT BATHROOM

- Door for direct access to the bathroom with full high mirror on the cabin side
- Synthetic resin countertop and washbasin
- Hot/cold mixer tap
- 2 tall cupboards 2 doors with mirror
- Shelves with s/s lining
- Anti-skid composite floor
- Separate shower with tempered glass door
- Composite shower grating
- Storage in the composite block of the shower
- Fresh water manual toilet, big size
- 1 opening deck hatch

### FORWARD CABIN

- 1 double bed with lateral access (2.05 x 1.60 m)
- 2 bed nightstands with storage
- 2 under bed drawers
- 1 cupboard with wardrobe (upper part) and shelves (lower part) – outboard side
- Bookshelves on 2 levels
- 2 opening deck hatches
- 1 hull fixe window in PMMA black silkscreen printing 910x423 mm with 1 integrated opening porthole

### FORWARD BATHROOM

- Door for direct access to the bathroom with full high mirror on the cabin side
- Synthetic resin countertop and washbasin
- Hot/cold mixer tap
- 2 tall cupboards 2 doors with mirror
- Anti-skid composite floor

- Separate shower with tempered glass door
- Composite shower grating
- Storage in the composite block of the shower
- Fresh water manual toilet, big size
- 1 opening deck hatch

## STARBOARD HULL

---

### AFT CABIN

- 1 double bed with lateral access (2.05 x 1.80 m)
- 1 bed nightstand with storage
- 2 x 2 under bed drawers
- 1 low cupboard with shelves – inboard side
- Storage cupboard – inboard side:
  - 2 wardrobes + shelves
  - Low cupboard with 3 drawers
  - High cupboard with flap
- Storage cupboard – outboard side:
  - 2 wardrobes + shelves, upper part
  - 3 drawers, lower part
- Desk with flaps and seat
- 3 drawers under the desk
- Desk height countertop along outside hull
- 1 sofa 2 seats
- Bookshelves on 2 levels
- 2 opening deck hatches
- 1 hull fixe window in PMMA black silkscreen printing 910x423 mm with 1 integrated opening porthole

### FORWARD BATHROOM

- Door for direct access to the bathroom with full high mirror on the cabin side
- Synthetic resin countertop and double washbasin
- Hot/cold mixer tap
- Up to the washbassins :
  - High cupboards 2 doors with mirror
  - 4 storage at the countertop level
  - Storage column with shelves
- Under the countertop :
  - Cupboard 4 doors with shelves
  - 3 drawers
  - 1 flap
  - Anti-skid composite floor
- 1 deck hatch opening on the shower
- Separate shower with tempered glass door
- Composite shower grating
- Storage in the composite block of the shower
- Folding teak seat
- 1 opening deck hatch
- Fresh water manual toilet, big size
- Low cupboard
- 1 hull fixe window in PMMA black silkscreen printing 910x423 mm with 1 integrated opening porthole

## 4 CABINS VERSION

---



Version 4 cabines / 4 cabin version

### SALON

---

- Sliding door and window with aluminum locker for the access to the cockpit, can be locked open or closed
- Large varnished salon table exchangeable with the low table from the cockpit (option)
- 6 people « L » bench on starboard
- Lockers under the bench
- 5 high cupboards with storage and shelves
- 4 under floor lockers
- Fabric covered steel pillar
- Wooden gunwale
- 4 opening hatches on the front windows

### CHART TABLE

---

- Large instrument console with panel to install the electronics
- Seat
- Desk with flaps
- 1 storage with 1 drawer and cupboard

### GALLEY

---

- « U » shape galley on portside
- Corian® « warm grey » countertop
- Double s/s sink with hot/cold mixer tap
- Storage under the sink
- 1 storage under the countertop with 1 fridge (104L) and 1 freezer (78L)
- 1 vertical sliding storage with 2 cutlery drawers and 1 high drawer
- 4 burners gas stove, base for pans
- Grill oven with s/s inside

- Flap under the oven
- Waste bin integrated in the countertop
- Integrated s/s dishes rest
- Unit with storage drawers (dishwasher option)
- High cupboards on portside (microwave option)
- 1 cabinet with 3 shelves in the companionway

## PORTSIDE HULL

---

### AFT CABIN

- Access from the transom through a gull-wing door with lock and handrail
- 1 double bed with lateral access (2.05 x 1.60 m)
- 2 bed nightstands, one with storage
- 1 under bed drawer
- Full high cupboard in 2 parts :
  - Upper part : 2 wardrobes + shelves
  - Lower part : shelves
- Desk with flap
- 3 drawers under the desk
- Desk height countertop along outside hull
- Bookshelves on 2 levels
- 1 low cupboard with shelves
- 1 opening porthole
- 2 opening deck hatches
- 1 hull fixe window in PMMA black silkscreen printing 910x423 mm with 1 integrated opening porthole

### AFT BATHROOM

- Door for direct access to the bathroom with full high mirror on the cabin side
- Synthetic resin countertop and washbasin
- Hot/cold mixer tap
- 2 high cupboards 2 doors with mirror
- Shelves with s/s lining
- Anti-skid composite floor
- Separate shower with tempered glass door
- Composite shower grating
- Storage in the composite block of the shower
- Fresh water manual toilet, big size
- 1 opening deck hatch

### FORWARD CABIN

- 1 double bed with lateral access (2.05 x 1.60 m)
- 2 bed nightstands with storage
- 2 under bed drawers
- 1 cupboard with wardrobe (upper part) and shelves (lower part) – outboard side
- Bookshelves on 2 levels
- 2 opening deck hatches
- 1 hull fixe window in PMMA black silkscreen printing 910x423 mm with 1 integrated opening porthole

**FORWARD BATHROOM**

- Door for direct access to the bathroom with full high mirror on the cabin side
- Synthetic resin countertop and washbasin
- Hot/cold mixer tap
- 2 high cupboards 2 doors with mirror
- Anti-skid composite floor
- Separate shower with tempered glass door
- Composite shower grating
- Storage in the composite block of the shower
- Fresh water manual toilet, big size
- 1 opening deck hatch

**STARBOARD HULL**

---

**AFT CABIN**

- 1 double bed with lateral access (2.05 x 1.60 m)
- 2 bed nightstands with storage
- 2 x 2 under bed drawers
- Outboard side :
  - Desk with flap
  - 1 seat
  - 1 shelve
- Inboard side, full high storage:
  - High cupboard
  - Central shelve
  - Drawer + double door cupboard + low countertop
  - Double wardrobe + 1 shelve
- 2 opening deck hatches
- 1 hull fixe window in PMMA black silkscreen printing 910x423 mm with 1 integrated opening porthole

**AFT BATHROOM**

- Bathroom open on the cabin
- Synthetic resin countertop and washbasin
- Hot/cold mixer tap
- High cupboard 2 doors with mirror
- Low cupboard 2 doors and shelves
- 1 towel holder
- Separate shower with tempered glass door
- Composite shower grating
- Storage in the composite block of the shower
- Large window with opening porthole integrated on the back
  
- Separate toilet with :
  - Fresh water manual toilet, big size
  - Toilet paper holder
  - Synthetic resin washbasin
  - Hot/cold mixer tap
  - 1 shelve
  - 1 low cupboard with towel holder
  - 1 opening deck hatch

**FORWARD CABIN**

- 1 double bed with lateral access (2.05 x 1.60 m)

- 2 bed nightstands
- 2 under bed drawers
- Outboard side :
  - 1 bookshelve
  - 3 low cupboards
- 2 cupboards in front of the bed
- 1 opening deck hatch
- 1 hull fixe window in PMMA black silkscreen printing 910x423 mm with 1 integrated opening porthole

**FORWARD BATHROOM**

- Door for direct access to the bathroom with full high mirror on the cabin side
- Synthetic resin countertop and washbasin
- Hot/cold mixer tap
- 2 tall cupboards 2 doors with mirror
- High cupboard 2 doors with mirror
- Low cupboard 2 doors and shelves
- Anti-skid composite floor
- Fresh water manual toilet, big size
- Separate shower with tempered glass door
- Composite shower grating
- Storage in the composite block of the shower
- 1 opening deck hatch

## 5 CABINS VERSION

---



Version 5 cabines / 5 cabin version

### SALON

---

- Sliding door and window with aluminum locker for the access to the cockpit, can be locked open or closed
- Large varnished salon table exchangeable with the low table from the cockpit (option)
- 6 people « L » bench on starboard
- Lockers under the bench
- 5 high cupboards with storage and shelves
- 4 under floor lockers
- Fabric covered steel pillar
- Wooden gunwale
- 4 opening hatches on the front windows

### CHART TABLE

---

- Large instrument console with panel to install the electronics
- Seat
- Desk with flaps
- 1 storage with 1 drawer and cupboard

### GALLEY

---

- « U » shape galley on portside
- Corian® « warm grey » countertop
- Double s/s sink with hot/cold mixer tap
- Storage under the sink
- 1 storage under the countertop with 1 fridge (104L) and 1 freezer (78L)
- 1 vertical sliding storage with 2 cutlery drawers and 1 high drawer
- 4 burners gas stove, base for pans
- Grill oven with s/s inside
- Flap under the oven
- Waste bin integrated in the countertop
- Integrated s/s dishes rest



- Unit with storage drawers (dishwasher option)
- High cupboards on portside (microwave option)
- 1 cabinet with 3 shelves in the companionway

## PORTSIDE HULL

---

### AFT CABIN

- Access from the transom through a gull-wing door with lock and handrail
- 1 double bed with lateral access (2.05 x 1.60 m)
- 2 bed nightstands, one with storage
- 1 under bed drawer
- Full high cupboard with 2 wardrobes and shelves
- Desk with flap
- 3 drawers under the desk
- Desk height countertop along outside hull
- Bookshelves on 2 levels
- 1 opening porthole
- 2 opening deck hatches
- 1 hull fixe window in PMMA black silkscreen printing 910x423 mm with 1 integrated opening porthole

### AFT BATHROOM

- Door for direct access to the bathroom with full high mirror on the cabin side
- Synthetic resin countertop and washbasin
- Hot/cold mixer tap
- 2 high cupboards 2 doors with mirror
- 2 low cupboards 2 doors with shelves
- Storage with tilting door
- 3 Shelves with s/s lining
- Anti-skid composite floor
- Fresh water manual toilet, big size
- Separate shower with tempered glass door
- Composite shower grating
- Storage in the composite block of the shower
- 1 opening deck hatch

### MIDDLE CABIN

- 2 bunk beds with lateral access (2.05 x 0.90 m)
- 1 storage at the head of the bed
- 1 storage at the foot of the bed
- Large under bed storage
- Tall cabinet 2 doors with wardrobe and shelve
- 1 opening hull porthole

### MIDDLE BATHROOM

- Door for direct access to the bathroom with full high mirror on the cabin side
- Synthetic resin countertop and washbasin
- Hot/cold mixer tap
- 2 high cupboards 2 doors with mirror
- 2 low cupboards 2 doors with shelves
- Anti-skid composite floor
- Integrated shower with PMMA separation
- Storage in the composite block of the shower

- Fresh water manual toilet, big size
- 1 opening deck hatch

#### **FORWARD CABIN**

- 1 double bed with lateral access (2.05 x 1.60 m)
- 2 bed nightstands
- 2 under bed drawers
- 1 wardrobe – outboard side
- Bookshelves on 2 levels
- 1 opening deck hatch
- 1 hull fixe window in PMMA black silkscreen printing 910x423 mm with 1 integrated opening porthole

#### **FORWARD BATHROOM**

- Door for direct access to the bathroom with full high mirror on the cabin side
- Synthetic resin countertop and washbasin
- Hot/cold mixer tap
- High cupboards 2 doors with mirror
- Low cupboards 2 doors with shelves
- Anti-skid composite floor
- Fresh water manual toilet, big size
- Separate shower with tempered glass door
- Composite shower grating
- Storage in the composite block of the shower
- 1 opening deck hatch

#### **STARBOARD HULL**

---

##### **AFT CABIN**

- 1 double bed with lateral access (2.05 x 1.60 m)
- 2 bed nightstands with storage
- 2 x 2 under bed drawers
- Outboard side :
  - Desk with flap
  - 1 seat
  - 1 shelve
- Inboard side, full high storage:
  - High cupboard
  - Central shelve
  - Drawer + double door cupboard + low countertop
  - Double wardrobe + 1 shelve
- 2 opening deck hatches
- 1 hull fixe window in PMMA black silkscreen printing 910x423 mm with 1 integrated opening porthole

##### **AFT BATHROOM**

- Bathroom open on the cabin
- Synthetic resin countertop and washbasin
- Hot/cold mixer tap
- High cupboard 2 doors with mirror
- Low cupboard 2 doors and shelves
- 1 towel holder
- Separate shower with tempered glass door

- Composite shower grating
- Storage in the composite block of the shower
- Large window with opening porthole integrated on the back
  
- Separate toilet with :
  - Fresh water manual toilet, big size
  - Toilet paper holder
  - Synthetic resin washbasin
  - Hot/cold mixer tap
  - 1 shelf
  - 1 low cupboard with towel holder
  - 1 opening deck hatch

#### **FORWARD CABIN**

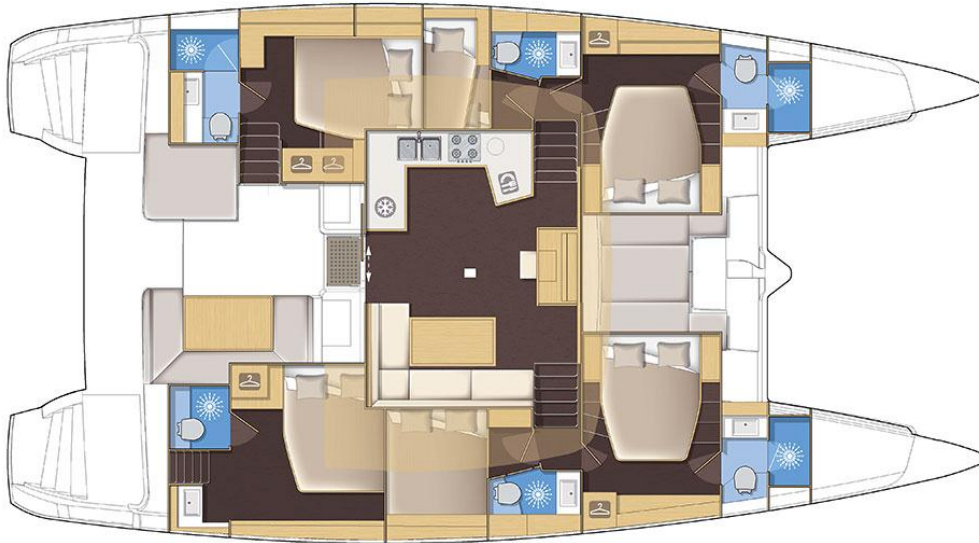
- 1 double bed with lateral access (2.05 x 1.60 m)
- 2 bed nightstands
- 2 under bed drawers
- Outboard side :
  - 1 bookshelve
  - 3 low cupboards
- 2 cupboards in front of the bed
- 1 opening deck hatch
- 1 hull fixe window in PMMA black silkscreen printing 910x423 mm with 1 integrated opening porthole

#### **FORWARD BATHROOM**

- Door for direct access to the bathroom with full high mirror on the cabin side
- Synthetic resin countertop and washbasin
- Hot/cold mixer tap
- 2 tall cupboards 2 doors with mirror
- High cupboard 2 doors with mirror
- Low cupboard 2 doors and shelves
- Anti-skid composite floor
- Fresh water manual toilet, big size
- Separate shower with tempered glass door
- Composite shower grating
- Storage in the composite block of the shower
- 1 opening deck hatch

## 6 CABINS VERSION

---



Version 6 cabines / 6 cabin version

### SALON

---

- Sliding door and window with aluminum locker for the access to the cockpit, can be locked open or closed
- Large varnished salon table exchangeable with the low table from the cockpit (option)
- 6 people « L » bench on starboard
- Lockers under the bench
- 5 high cupboards with storage and shelves
- 4 under floor lockers
- Fabric covered steel pillar
- Wooden gunwale
- 4 opening hatches on the front windows

### CHART TABLE

---

- Large instrument console with panel to install the electronics
- Seat
- Desk with flaps
- 1 storage with 1 drawer and cupboard

### GALLEY

---

- « U » shape galley on portside
- Corian® « warm grey » countertop
- Double s/s sink with hot/cold mixer tap
- Storage under the sink
- 1 large combined fridge (338 L) and freezer (82 L)
- 1 vertical sliding storage with 2 cutlery drawers and 1 high drawer
- 4 burners gas stove, base for pans
- Grill oven with s/s inside
- Flap under the oven

- Waste bin integrated in the countertop
- Integrated s/s dishes rest
- Unit with storage drawers (dishwasher option)
- High cupboards on portside (microwave option)
- 1 cabinet with 3 shelves in the companionway

## PORTSIDE HULL

---

### AFT CABIN

- Access from the transom through a gull-wing door with lock and handrail
- 1 double bed with lateral access (2.05 x 1.60 m)
- 2 bed nightstands, one with storage
- 1 under bed drawer
- Full high cupboard with 2 wardrobes and shelves
- Desk with flap
- 3 drawers under the desk
- Desk height countertop along outside hull
- Bookshelves on 2 levels
- 1 opening porthole
- 2 opening deck hatches
- 1 hull fixe window in PMMA black silkscreen printing 910x423 mm with 1 integrated opening porthole

### AFT BATHROOM

- Door for direct access to the bathroom with full high mirror on the cabin side
- Synthetic resin countertop and washbasin
- Hot/cold mixer tap
- 2 high cupboards 2 doors with mirror
- 2 low cupboards 2 doors with shelves
- Storage with tilting door
- 3 Shelves with s/s lining
- Anti-skid composite floor
- Fresh water manual toilet, big size
- Separate shower with tempered glass door
- Composite shower grating
- Storage in the composite block of the shower
- 1 opening deck hatch

### MIDDLE CABIN

- 2 bunk beds with lateral access (2.05 x 0.90 m)
- 1 storage at the head of the bed
- 1 storage at the foot of the bed
- Large under bed storage
- Tall cabinet 2 doors with wardrobe and shelve
- 1 opening hull porthole

### MIDDLE BATHROOM

- Door for direct access to the bathroom with full high mirror on the cabin side
- Synthetic resin countertop and washbasin
- Hot/cold mixer tap
- 2 high cupboards 2 doors with mirror
- 2 low cupboards 2 doors with shelves
- Anti-skid composite floor

- Integrated shower with PMMA separation
- Storage in the composite block of the shower
- Fresh water manual toilet, big size
- 1 opening deck hatch

**FORWARD CABIN**

- 1 double bed with lateral access (2.05 x 1.60 m)
- 2 bed nightstands
- 2 under bed drawers
- 1 wardrobe – outboard side
- Bookshelves on 2 levels
- 1 opening deck hatch
- 1 hull fixe window in PMMA black silkscreen printing 910x423 mm with 1 integrated opening porthole

**FORWARD BATHROOM**

- Door for direct access to the bathroom with full high mirror on the cabin side
- Synthetic resin countertop and washbasin
- Hot/cold mixer tap
- High cupboards 2 doors with mirror
- Low cupboards 2 doors with shelves
- Anti-skid composite floor
- Fresh water manual toilet, big size
- Separate shower with tempered glass door
- Composite shower grating
- Storage in the composite block of the shower
- 1 opening deck hatch

**STARBOARD HULL**

---

**AFT CABIN**

- Access from the aft transom
- Teak steps on s/s frame
- 1 double bed with lateral access (2.05 x 1.60 m)
- 1 bed nightstand
- 1 under bed drawer
- 2 opening deck hatches
- 1 hull fixe window in PMMA black silkscreen printing 910x423 mm with 1 integrated opening porthole

**AFT BATHROOM**

- Door for direct access to the bathroom with full high mirror on the cabin side
- Synthetic resin countertop and washbasin
- Hot/cold mixer tap
- High cupboards 2 doors with mirror
- Low cupboards 2 doors with shelves
- Anti-skid composite floor
- Fresh water manual toilet, big size
- Separate shower with tempered glass door
- Composite shower grating
- Storage in the composite block of the shower
- 1 opening deck hatch

**MIDDLE CABIN**

- 1 double bed with lateral access (2.05 x 1.60 m)
- 1 bed nightstand
- 1 under bed drawer
- 1 opening hull porthole

**MIDDLE BATHROOM**

- Door for direct access to the bathroom with full high mirror on the cabin side
- Synthetic resin countertop and washbasin
- Hot/cold mixer tap
- 2 high cupboards 2 doors with mirror
- 2 low cupboards 2 doors with shelves
- Anti-skid composite floor
- Integrated shower with PMMA separation
- Storage in the composite block of the shower
- Fresh water manual toilet, big size
- 1 opening deck hatch

**FORWARD CABIN**

- 1 double bed with lateral access (2.05 x 1.60 m)
- 2 bed nightstands
- 2 under bed drawers
- 1 wardrobe – outboard side
- Bookshelves on 2 levels
- 1 opening deck hatch
- 1 hull fixe window in PMMA black silkscreen printing 910x423 mm with 1 integrated opening porthole

**FORWARD BATHROOM**

- Door for direct access to the bathroom with full high mirror on the cabin side
- Synthetic resin countertop and washbasin
- Hot/cold mixer tap
- High cupboards 2 doors with mirror
- Low cupboards 2 doors with shelves
- Anti-skid composite floor
- Fresh water manual toilet, big size
- Separate shower with tempered glass door
- Composite shower grating
- Storage in the composite block of the shower
- 1 opening deck hatch



162, quai de Brazza  
CS 81217  
33072 Bordeaux Cedex - France  
Tél. 33 + (0) 557 80 92 80  
E-mail : [info@cata-lagoon.com](mailto:info@cata-lagoon.com)  
**[www.cata-lagoon.com](http://www.cata-lagoon.com)**