

450 F

Technical specification

L A G O O N

Contents

| | |
|--------------------------|------------------------------------|
| TECHNICAL DATAS | 3 |
| CONSTRUCTION..... | Erreur ! Signet non défini. |
| SAILS AND RIGGINGS | 3 |
| HARDWARE | 4 |
| MOORING..... | 4 |
| VARIOUS EQUIPMENTS..... | 5 |
| MOTORISATION..... | 5 |
| PLUMBING..... | 5 |
| ELECTRICS | 5 |
| DECK LAYOUT | 7 |
| TRANSOM..... | 7 |
| AFT COCKPIT | 7 |
| FLYBRIDGE..... | 7 |
| FORWARD COCKPIT..... | 7 |
| BOW LOCKERS | 7 |
| INTERIOR LAYOUTS..... | 8 |
| GENERALITIES..... | 8 |
| 3 CABINS VERSION..... | 9 |
| 4 CABINS VERSION..... | 12 |

TECHNICAL DATAS

| | |
|------------------------------|-----------------------------------|
| Length over all LOA | 13,96 m / 45'10" |
| Length | 13,38 m / 43'11" |
| Beam over all | 7,87 m / 25'1" |
| Mast clearance | 23,05 m / 75'8" |
| Draft | 1,30 m / 4'3" |
| Displacement (ECC) | 15,10 t / 33296 Lbs |
| Upwind sail area | 130 m ² / 1399 sq.ft. |
| Full batten mainsail | 79 m ² / 850 sq.ft. |
| Square top mainsail (option) | 81 m ² / 872 sq.ft. |
| Furling genoa | 51 m ² / 549 sq.ft. |
| Code 0 (option) | 93 m ² / 1001 sq.ft. |
| Fresh water capacity | 2 x 175 l / 2 x 46 US gal |
| Fuel capacity | 2 x 520 l / 2 x 137 US gal |
| Engines | 2 x 45 cv CR à 2 x 57 cv CR |
| Architects | Van Peteghem-Lauriot Prévost |
| Interior Design | Nauta Design |
| Nb of berths | 6 to 12 |
| EC Certification | A : 12 - B : 14 - C : 20 - D : 30 |

US SPECIFICATIONS

Only for boats sold in USA

- 110V heating element in water heater
- 1 holding tank with gravity drain/deck pump out in each head
- 1/2" windlass gypsy for non-metric chain
- Gas propane circuit with solenoid valve

CONSTRUCTION

- Polyester and high quality anti-osmotic resin
- Hull and deck laminated by infusion
- Balsa core hull, solid laminate under water line, white gel coat
- Balsa core bridge deck and deck
- Laminated marine plywood bulkheads

SAILS AND RIGGINGS

SAILS

- 1 high roach mainsail in Dacron with battens and LAGOON logo
- 1 genoa in Dacron with UV protective band

RIGGING

- Tripod aluminum mast with mainsail track and ball-bearing
- Aluminum boom
- 2 encased shrouds
- 1 genoa forestay with manual furler
- 2 lazy-jacks for the mainsail
- Deck light on the mast

RUNNING RIGGING

- 1 double purchase spectra mainsail halyard
- 1 spectra Genoa halyard
- 1 mainsail sheet pre-stretched
- 2 genoa sheets pre-stretched
- 1 boom topping lift
- 3 reefing lines (1st dynema)
- 1 genoa furling line pre-stretched
- 2 mainsail traveler car control lines pre-stretched

HARDWARE

- 3 manual winches 60.2 STA (mainsail)
- Genoa tracks with genoa car and stopper
- Anodized aluminum crossbeam with mooring point for the genoa furler, anchor roller and navigation lights

MOORING

- Composite longitudinal crossbeam with avec integrated chain run and forestay chain plate
- 8 mooring cleats
- 1700W 12V electrical windlass with vertical axe, gypsy (chain 12mm) and wireless remote in the anchor locker
- Access to the windlass and to the anchor locker through a vertical hatch

VARIOUS EQUIPMENTS

- Pushpits with on port with flag pole and buoy bracket
- Height of the stanchions : 610 mm
- 2 ranges of life line

MOTORISATION

- 2 diesel engines YANMAR 4JH45 45cv common rail sail drive
- 2 blades fixe propeller
- Sea water filter
- Mechanical engine throttles at the helm station
- Ventilation of the engine compartment : electrical extraction in the aft transom
- Sound-proofing of the engine compartment
- Fuel circuit :
 - 2 aluminum tanks of 2 x 520 liters
 - Fuel filter systems
 - Fuel shut off valve
 - Gauge at the general control panel

PLUMBING

Fresh water circuit:

- Fresh water tank : 2 x 175L with gauge at the chart table
- Fresh water circuit with 1 main water group in the port companionway
- 60L electric water heater, 220V/engine exchanger

Grey water:

- Shower and washbasin drain to grey water tank and automatic pump
- Galley sinks drain directly overboard

Black water:

- 1 holding tank aft portside (80 liters)

Bilge pump circuit:

- 1 manual bilge pump in each hull with cockpit pump
- 1 automatic immersed bilge pump by hull
- 1 manual release non-immersed bilge pump by hull

ELECTRICS

Power circuit:

- 2 alternators 12V 80A
- 2 start batteries 12V 110A
- 3service batteries 12V 140Ah

Batteries breaker under the bed of the aft starboard cabin

Distribution Electric panel:

- 12V General distribution panel at the chart table with protection by circuit breaker
- Ammeter, voltmeter, circuit breaker, panel lighting, cigarette lighter

Lighting:

- 12V LED outside lighting
- 12V LED inside lighting
- Navigation lights LED
- 12V lighting in the engine compartment

DECK LAYOUT

TRANSOM

- Hot/cold deck shower on starboard
- S/s swim ladder on starboard with handrail
- Storage on the side of the transom (port and starboard)

AFT COCKPIT

- Large cockpit usable as a deck salon, protected by a hard top bimini
- "U" bench on portside with storage locker
- Gas locker (2 bottles of 10 kg)
- Removable polyester cockpit table 8/10 people
- Large storage locker with possibility to install option like icemaker and synthetic resin countertop
- 1 "Lazy boy" area with locker in the seat on starboard
- Waste bin with upper access and lateral door on portside
- Storage locker with top access (70 L) and evacuation on portside
- Polyester fiddle anti-runoff on the sides of the cockpit

FLYBRIDGE

- 2 staircases to access from the deck and from the cockpit
- Large bench 6 seats
- Storage in the lateral staircase to access to the fly
- Sunbed at the front of the helm station
- Helm station with :
 - Covered steering wheel and brake
 - Engines throttle and panel
 - Compass
 - Console for screen and instrumentation
 - Cup holder
 - Halyards storage

FORWARD COCKPIT

- « U » seating area
- Storage locker under the portside seat - generator
- Storage locker under the portside seat
- Storage locker under the central seat
- Trampoline with nylon thread

BOW LOCKERS

- Access through opening deck hatches with locker
- Wooden floor
- White painting
- Lighting

INTERIOR LAYOUTS

GENERALITIES

- Interior woodwork in Alpi blond oak plywood
- Dark brown laminated floor (Milano)
- S/s handrail leather covered
- Fabric-covered plywood ceiling panels or fiberglass liners in cabins and wash rooms
- Fabric-covered plywood on hull liner in cabins
- Polyester ceiling and fabric-covered plywood in the salon
- Access to the cabins and bathrooms without doorstep

Standing headroom

| | |
|------------|--------|
| Salon : | 2.06m |
| Cabin : | 2.04 m |
| Bathroom : | 2.04 m |

Mattress and upholstery

- Marine mattresses made of multi-layer alveolar foam with several densities (tick. 130mm)
- Mattresses treatment: anti-microbial, anti-bacterial, non-allergenic, anti-dust mite
- Standard upholstery as indicated on Lagoon sample book
- Synthetic fabrics adapted to marine environment:
 - washable (40°C)
 - U.V. resistant
 - water repellent, with anti-stain treatment
- Blackout curtains in the cabins and salon

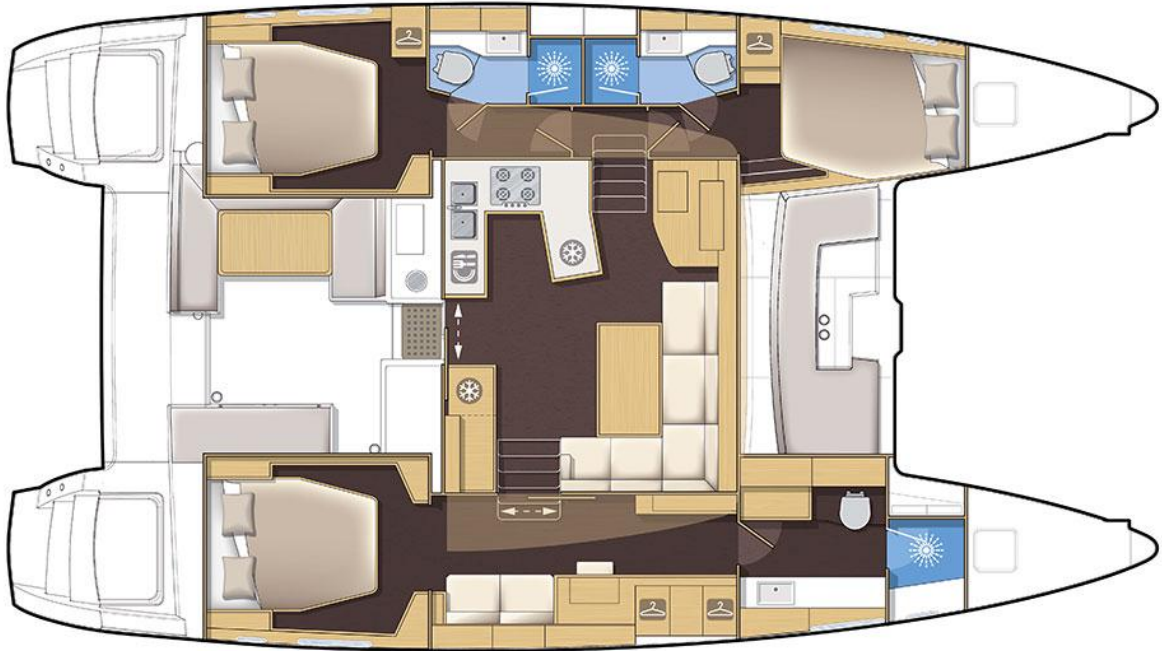
Lighting

- 12V LED ceiling spotlights
- 12V LED reading lights headboard
- 12V LED reading lights at the chart table

Available version

- 3 cabins
- 4 cabins

3 CABINS VERSION



Version 3 cabines / 3 cabin version

SALON

- Sliding door and window with aluminum locker for the access to the cockpit, can be locked open or closed
- Large varnished salon table exchangeable with the polyester table from the cockpit (and the low table in option) and convertible in berth
- 6 seats « L » bench on starboard
- Lockers under the bench
- Various high and low storage on the starboard cupboard in front of the table (option TV/ option second fridge or freezer)
- Fabric covered steel pillar
- Wooden gunwale
- 2 opening portholes in the front window
- 1 opening porthole in the port side window

CHART TABLE

- Large instrument console with panel to install the electronics
- Seat (*Essential equipment*)
- Desk with flaps
- 2 storage niches

GALLEY

- « U » shape galley on portside
- Synthetic resin countertop
- Double s/s sink with hot/cold mixer tap
- Storage under the sink

- 3 burners gas stove
- Grill oven with s/s inside
- Flap under the oven
- Bottle storage
- 12V 130L fridge with wooden front door
- Storage unit with drawers (dishwasher option)
- High cupboards on portside (microwave option)

PORTSIDE HULL

AFT CABIN

- 1 double bed with lateral access (2.05 x 1.60 m)
- 2 bed nightstands, one with storage
- 2 under bed drawers
- 1 full high wardrobe – outboard side
- 1 long shelf
- 1 low cupboard with shelves – inboard side
- 1 opening deck hatch
- 1 opening porthole
- 1 hull fixe window in Plexiglas white silkscreen printing

AFT AND FORWARD BATHROOM

- Synthetic resin countertop and washbasin
- Hot/cold mixer tap
- High cupboards 2 doors with mirror
- Separate shower with Plexiglas door
- Composite shower grating
- Big size manual toilet
- 1 opening deck hatch

FORWARD CABIN

- 1 double bed with lateral access (2.05 x 1.42 m)
- 1 under bed drawer
- 1 large headboard mirror
- 1 cupboard with wardrobe (upper part) and shelves (lower part) – inboard side
- 1 storage niche with on central shelf – outboard side
- Bookshelves on 2 levels
- 1 opening deck hatch
- 1 opening porthole
- 1 hull fixe window in Plexiglas white silkscreen printing

STARBOARD HULL

AFT CABIN

- Sliding door with locker
- 1 double bed with lateral access (2.05 x 1.60 m)
- 2 bed nightstands with storage
- 1 under bed drawer
- 2 low cupboard at the foot of the bed

- 2 seats sofa with storage
- Dessert trolley on the side of the sofa
- Desk with flap

- Large storage cupboard with 4 doors and 1 bookshelve – outboard side
- Cupboard unit with :
 - 2 doors wardrobe + 1 door with shelves – upper part
 - 3 drawers and shelves – lower part
- 3 opening deck hatches
- 1 opening portholes
- 1 hull fixe window in Plexiglas white silkscreen printing 910x423 mm

FORWARD BATHROOM

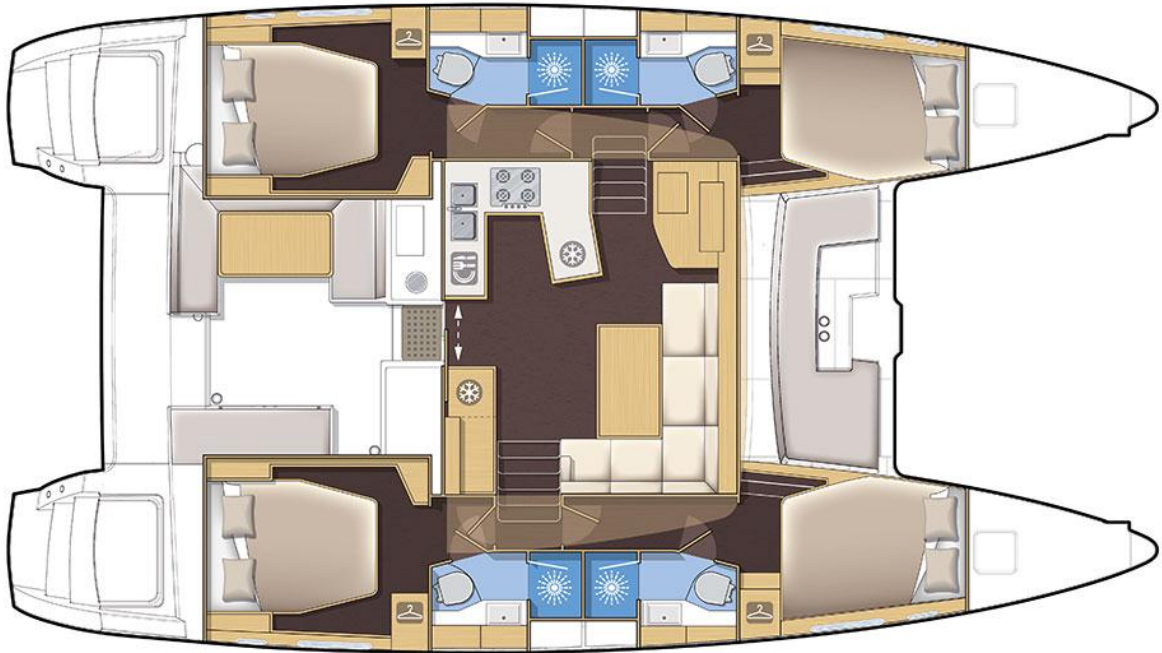
- Synthetic resin countertop and washbasin
- Hot/cold mixer tap
- High cupboards 3 doors with mirror
- Low cupboards 4 doors under the washbasin
- Teak floor

- Separate shower with Plexiglas glass door
- Composite shower grating

- Big size manual toilet
- High cupboards 2 doors

- 1 hull fixe window in Plexiglas black silkscreen printing 910x423 mm with 1 integrated 1 opening deck hatch
- 1 opening porthole
- 1 hull fixe window in Plexiglas white silkscreen printing

4 CABINS VERSION



Version 4 cabines / 4 cabin version

SALON

- Sliding door and window with aluminum locker for the access to the cockpit, can be locked open or closed
- Large varnished salon table exchangeable with the polyester table from the cockpit (and the low table in option) and convertible in berth
- 6 seats « L » bench on starboard
- Lockers under the bench
- Various high and low storage on the starboard cupboard in front of the table (option TV/ option second fridge or freezer)
- Fabric covered steel pillar
- Wooden gunwale
- 2 opening portholes in the front window
- 1 opening porthole in the port side window

CHART TABLE

- Large instrument console with panel to install the electronics
- Seat (*Essential equipment*)
- Desk with flaps
- 2 storage niches

GALLEY

- « U » shape galley on portside
- Synthetic resin countertop
- Double s/s sink with hot/cold mixer tap

- Storage under the sink
- 3 burners gas stove
- Grill oven with s/s inside
- Flap under the oven
- Bottle storage
- 12V 130L fridge with wooden front door
- Storage unit with drawers (dishwasher option)
- High cupboards on portside (microwave option)

PORTSIDE HULL

AFT CABIN

- 1 double bed with lateral access (2.05 x 1.60 m)
- 2 bed nightstands, one with storage
- 2 under bed drawers
- 1 full high wardrobe – outboard side
- 1 long shelf
- 1 low cupboard with shelves – inboard side
- 1 opening deck hatch
- 1 opening porthole
- 1 hull fixe window in Plexiglas white silkscreen printing

AFT AND FORWARD BATHROOM

- Synthetic resin countertop and washbasin
- Hot/cold mixer tap
- High cupboards 2 doors with mirror
- Separate shower with Plexiglas door
- Composite shower grating
- Big size manual toilet
- 1 opening deck hatch

FORWARD CABIN

- 1 double bed with lateral access (2.05 x 1.42 m)
- 1 under bed drawer
- 1 large headboard mirror
- 1 cupboard with wardrobe (upper part) and shelves (lower part) – inboard side
- 1 storage niche with on central shelf – outboard side
- Bookshelves on 2 levels
- 1 opening deck hatch
- 1 opening porthole
- 1 hull fixe window in Plexiglas white silkscreen printing

STARBOARD HULL

Identical to the starboard hull



162, quai de Brazza
CS 81217
33072 Bordeaux Cedex - France
Tél. 33 + (0) 557 80 92 80
E-mail : info@cata-lagoon.com
www.cata-lagoon.com